

Here is a PDF Printable Map provided by Crockett County Museum. It is designed to give you an overview of what kind of displays we have. We will have slightly larger copies available at the museum, for your convenience, but we thought you might want a sneak peak at what our museum offers.

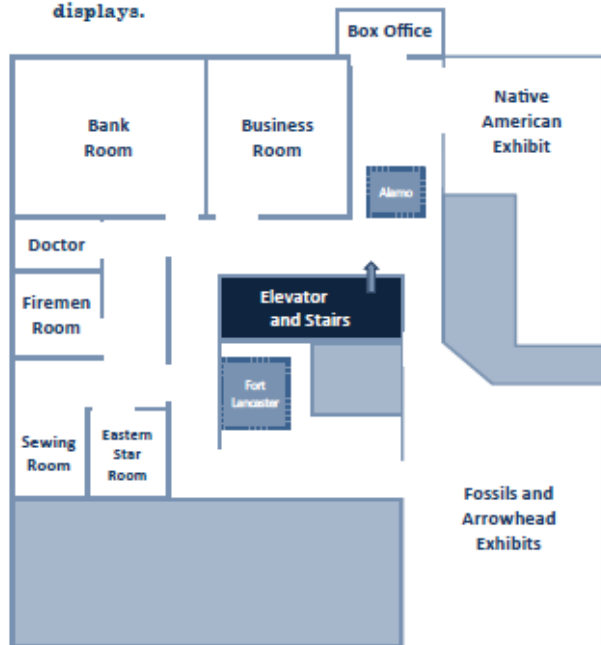
Visit us Weekdays from 9am to 5pm or Saturdays from 10am to 3pm.

Give us a call if you have any questions: 325-392-2837

## *We don't want you to miss a thing!*

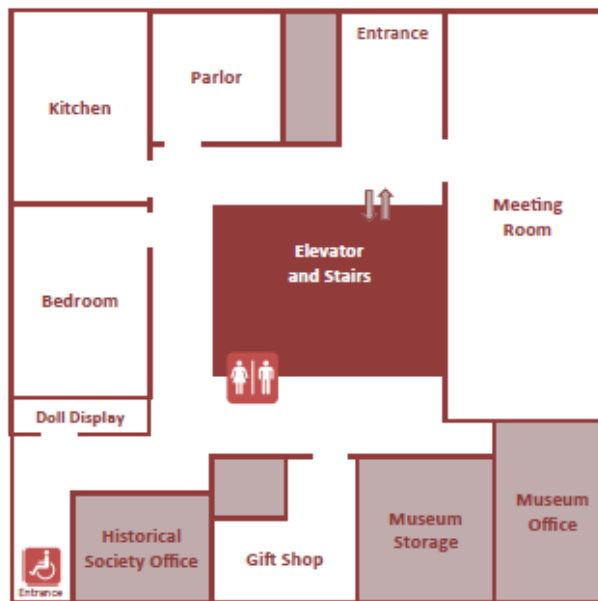
*So, here's a handy map to help you get around.*

**Our first floor is home to some of our oldest exhibits. We have exhibits dating back to the stone age. Make sure to visit our more modern rooms too, like our bank, business and doctor displays.**



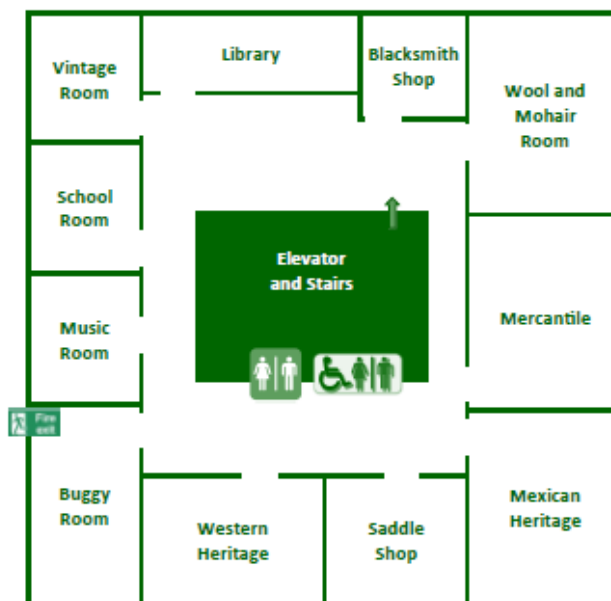
FIRST FLOOR

**Our second floor, and entrance floor, is home to our more familiar displays. We have all the rooms of an antique house set up just as it was when those items were in vogue.**



SECOND FLOOR

**Our third floor houses many of our merchant and heritage rooms. From Western to Mexican Heritage, this floor has a wide variety of exhibits. Don't forget to visit the school and music room.**



THIRD FLOOR

Remember, you are starting on the second floor which is our street level and entrance floor. Use the elevator or stairs to go up to third floor exhibits or down to visit our first floor exhibits.  
 Note: These maps are oriented as if you just got out of the elevator or just walked up the stairs. If you keep them facing the right way, you should have no problems navigating the museum.